

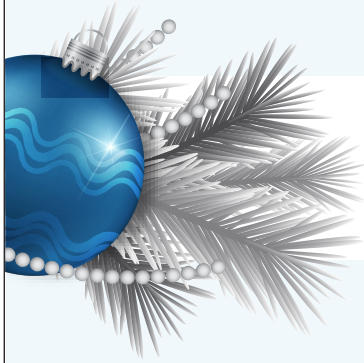


# NOVEMBER

AUSTRALIA 2024



## TOOTH WHITENING



### GREAT CHRISTMAS GIFT IDEA!

SECURE STOCK FOR YOUR PATIENTS BEFORE CHRISTMAS.

## ENJOY A BRIGHTER, MORE CONFIDENT SMILE IN 5 DAYS

- No custom trays required
- Reduced patient consult time
- Entry level whitening option
- Great front desk conversation starter

## POLA LIGHT



### BUY 8 GET 2 FREE PLUS A FREE POLA DISPLAY STAND

[INCLUDES CHRISTMAS INSERT]

## SAVE \$361.70



Available in 6% and 9.5% hydrogen peroxide.

**DENTIST PRICE** MRP \$109.15  
**RECOMMENDED PATIENT PRICE** \$189.00

#### POLA LIGHT 6%

- 1x Pola LED mouthpiece
- 3x 3g Pola Day 6% tooth whitening syringes
- 1x 5.5mL Pola Luminate
- 1x USB charging cord

#### POLA LIGHT 9.5%

- 1x Pola LED mouthpiece
- 4x 3g Pola Day 9.5% tooth whitening syringes
- 1x USB charging cord



# TOOTH WHITENING

## TAKE HOME WHITENING

POLA DAY, POLA NIGHT, POLA DAY CP, POLA LUMINATE AND POLA ALIGNERS

**3+1\***  
BUY 3, GET 1 FREE

**11+5\***  
BUY 11, GET 5 FREE



### POLA DAY

HYDROGEN PEROXIDE BASED ADVANCED TRAY TOOTH WHITENING SYSTEM

- Available in **6% 7.5%** and **9.5% hydrogen peroxide** applications
- From 30 minutes once a day
- 3 packaging choices - 4, 10 or 50 syringes
- Neutral pH and desensitising additives
- Stays in place

### POLA LUMINATE

BRUSH ON & GO!

- No trays required - quick and easy professional brush on tooth whitener
- Available in **6% hydrogen peroxide**, low viscosity fast drying gel
- Apply twice a day for just 30 minutes

**DENTIST PRICE \$24.82**

RECOMMENDED PATIENT PRICE \$75.00

### POLA NIGHT

CARBAMIDE PEROXIDE BASED ADVANCED TRAY TOOTH WHITENING SYSTEM

- Available in **10% 16% 18%** and **22% carbamide peroxide**
- From 45 minutes once a day
- 3 packaging choices - 4, 10 or 50 syringes
- Neutral pH and desensitising additives
- Stays in place

POLA 4 X 1.3G MINI KIT	MRP \$41.47
POLA 10 X 1.3G SYRINGE KIT	MRP \$101.57
POLA 50 X 3G DISPENSER PACK	MRP \$513.00
POLA FOR ALIGNERS	MRP \$87.10



### POLA DAY CP

SUPER FAST TRAY TOOTH WHITENING SYSTEM!

- Available in **35% carbamide peroxide**
- From just 15 minutes per day tray wear time
- Contains fluoride
- Neutral pH
- Desensitising additives
- High water content
- Can be used as a jump start system

### POLA FOR ALIGNERS

STRAIGHTEN AND BRIGHTEN TOGETHER

- Available in **10% carbamide peroxide**
- The greatest patient comfort in a whitening kit
- Contains potassium nitrate and fluoride to reduce sensitivity for long term use
- High viscosity gel ensures it can be easily and securely placed into the aligner tray, staying in place

## POLA RAPID

SUPER. FAST. WHITENING.



Pola Rapid is the new in office whitening treatment that safely whitens teeth in a 24 minute application time.

#### SUPERIOR HANDLING AND FAST REMOVAL

Pola Rapid's higher viscosity gel enables faster application and removal due to its specially formulated non-stick attributes. Pola Rapid can be extruded quickly and easily and remains on teeth when applied.

#### ENHANCED BLUE GEL FOR FASTER APPLICATION

Pola Rapid uses an advanced blue gel for ease of visibility and application. The easy to apply non-stick gel enables faster application and removal.

#### MINIMAL CHAIR TIME WITH IMMEDIATE RESULTS

A unique **38% hydrogen peroxide** formulation that releases active ingredients immediately. In only one visit, Pola Rapid initiates a powerful whitening treatment designed to whiten teeth in 24 minutes. No pre-desensitiser step is required.

POLA RAPID 3 PATIENT KIT	MRP \$442.37
POLA RAPID 3 PATIENT KIT WITH OPTRAGATE	MRP \$471.18
POLA RAPID 1 PATIENT KIT	MRP \$156.79
POLA RAPID 1 PATIENT KIT WITH OPTRAGATE	MRP \$167.75

**2+1\*** BUY 2, GET 1 FREE

# IN-CHAIR WHITENING BUNDLE!

PURCHASE THE RADII XPERT FOR THE SPECIAL PRICE OF **\$2100.00\***

AND RECEIVE THE FOLLOWING FREE\*



- x1 BLEACH ARCH ATTACHMENT
- x1 POLA STAND 2
- x1 POLA RAPID 3 PATIENT KIT WITH OPTRAGATE

**SAVE**  
**\$2129.87\***



RADII XPERT  
MRP \$2248.90



# ALL COMPOSITES 6+2\* BUY 6, GET 2 FREE

## UNIVERSAL COMPOSITES



### LUNA 2

Luna 2 is SDI's standout universal composite, with a unique blend of fillers to deliver outstanding optical and mechanical properties.

- Non-stick handling that maintains its sculpted shape
- Chameleon effect for accurate shade matching
- BPA free

LUNA 2 4g SYRINGE	MRP \$106.25
LUNA 2 20 X 0.25g COMPLETS	MRP \$137.96
LUNA 2 INTRO KIT	MRP \$516.86



### AURA EASY

Aura Easy is a universal composite available in 4 simplified shades to ensure easy restorations with reduced inventory.

- 4 shades cover 16 Vita® shades
- Non-stick and easy to sculpt
- Wear resistant with high strength

AURA EASY 4G SYRINGE	MRP \$111.19
AURA EASY 20 X 0.25G COMPLETS	MRP \$125.07



### AURA

Aura is a universal composite ideal for layering technique to help clinicians achieve maximum aesthetics with minimal effort.

- Dentine and enamel shades
- High polishability and gloss
- High-strength and wear resistance

AURA DENTINE 4g SYRINGE	MRP \$117.41
AURA DENTINE 20 X 0.25g COMPLETS	MRP \$132.09
AURA ENAMEL 3g SYRINGE	MRP \$90.86
AURA ENAMEL 20 X 0.20g COMPLETS	MRP \$110.08

## FLOWABLE COMPOSITES



### LUNA FLOW

Luna Flow is an extra strong flowable composite available in two viscosities that offer excellent mechanical and optical properties.

- Effortlessly flows to margins with thixotropic properties
- Excellent strength, radiopacity and wear resistance
- Accurate shade matching

LUNA FLOW/LV 2g SYRINGE	MRP \$53.12
LUNA FLOW/LV BULK KIT 5 X 2g SYR	MRP \$219.09
LUNA FLOW/LV INTRO KIT 4 X 2g SYR	MRP \$196.38



### AURA EASYFLOW

Aura Easyflow is a universal flowable composite available in 4 simplified shades with optimised features for every layer of use.

- 4 shades cover 16 Vita® shades
- Thixotropic for maximum control during application
- High flexural strength and radiopacity

AURA EASYFLOW 2g SYRINGE	MRP \$53.76
--------------------------	-------------



### WAVE

Wave is a universal flowable composite with proven mechanical properties that is available in three viscosities.

- Natural fluorescence
- Three viscosities

WAVE BULK KIT 10 X 1g SYRINGE	MRP \$183.98
WAVE 1g SYRINGE	MRP \$29.51

## BULK FILL COMPOSITES



### AURA BULK FILL

Aura Bulk Fill is a posterior composite with a natural looking finish available in just one universal shade for easy and quick restorations. The waxy consistency is packable and non-sticky to optimize handling.

- 5mm depth of cure
- Non-stick, waxy consistency
- Low volumetric shrinkage

AURA BULK FILL 4g SYRINGE	MRP \$111.83
AURA BULK FILL 20 X 0.25g COMPLETS	MRP \$125.80

PLEASE SCAN FOR MORE DETAILED INFORMATION ON THE FULL RANGE OF SDI COMPOSITES.





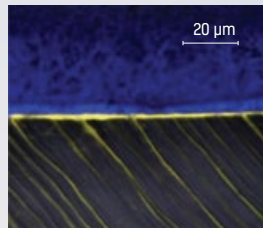


# STELA

**BPA & HEMA FREE**

## THE FUTURE OF COMPOSITES

- ✓ Unlimited depth of cure [self cure]
- ✓ Gap-free interface
- ✓ Only 2 steps: 15 sec prep
- ✓ High strength
- ✓ Choose: capsule or automix



**STELA GAP-FREE BONDING INTERFACE**  
 A confocal micrograph of a gap-free Stela-dentin interface. Note the penetration depth of Stela Primer [yellow] within the dentin tubules.

Source: Dr Salvatore Sauro

**BUY 2 GET 1 FREE**



STELA AUTOMIX REFILL	MRP \$191.26
STELA AUTOMIX INTRO KIT	MRP \$231.66
STELA CAPSULE REFILL	MRP \$278.08
STELA CAPSULE INTRO KIT	MRP \$138.61



**DR. JOSÉ CEDILLO**  
 Fellow and Diplomat Of The World Congress of Minimally Invasive Dentistry - Valencia



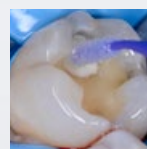
First and second lower molars with defective composite restorations



Caries removed and large Class I cavities prepared



Application of calcium hydroxide to protect the deepest area of one cavity, followed by application of Stela Primer



Restoration complete

# ADHESIVES

## THE ALL-IN-ONE ADHESIVE SOLUTION FOR EVERY SITUATION

### UNIVERSAL ADHESIVE

- Consistent bond strengths to dentine and enamel
- Wet and dry dentine bonding
- Proprietary combination of adhesive monomers including MDP
- Predictable bond strengths to indirect substrates
- Effective hybridisation
- Exceptional control
- Highly aesthetic
- Pleasant aroma

ZIPBOND REFILL 5mL BOTTLE MRP \$155.19



DISCOUNTED PRICE  
**\$115**

DEFENCE AGAINST CLINICAL VARIABILITY

	<b>29</b> CLINICAL EVALUATORS
	<b>862</b> TOTAL USES
	<b>93%</b> CLINICAL RATING

# CEMENTS

## ALL CEMENTS - BUY 2 GET 1 FREE

### RESIN MODIFIED GLASS IONOMER CEMENTS [RMGIs]

These cements bond to dentine and must only be used in preparations that have high retention and strength. In addition, these cements release fluoride and are excellent for patients at a high caries risk. RMGIs can also be used in cases where isolation is difficult to achieve.

RIVA CEM AUTOMIX | RIVA LUTING PLUS



RIVA CEM AUTOMIX SYRINGE REFILL 2x4g	MRP \$114.35
RIVA CEM AUTOMIX MIXING TIPS 50PK	MRP \$75.23
RIVA LUTING PLUS 50 CAPSULES	MRP \$302.73

### SELF-ADHESIVE RESIN CEMENTS

[Also called self-adhesive cements]. These cements do not require pre etching or bonding. Full isolation is required.

SET PP | SET



SET PP ASST KIT	MRP \$271.67
SET PP 2 SYR	MRP \$179.74
SET 50 CAPSULES	MRP \$346.12

### CONVENTIONAL GLASS IONOMER CEMENTS

These cements chemically bond to the tooth. They have low film thickness and a high fluoride release and are excellent for patients at a high caries risk.

RIVA LUTING



RIVA LUTING 50 CAPSULES	MRP \$283.71
-------------------------	--------------

# EQUIPMENT

## RADII XPERT

SMARTER DESIGN.  
OPTIMAL CURE EVERY TIME.

Radii Xpert's unique target assist technology enables you to correctly position the light and be confident of the angulation before curing.

**360°**  
ROTATABLE HEAD

**185G**  
LIGHT WEIGHT

**2.5 HOUR**  
RUNTIME



**\$1500\***

RADII XPERT  
MRP \$2248.90

## RADII-CAL CX

COLLIMATED FOR A DEEPER,  
MORE RELIABLE CURE

The collimated beam of the Radii-Cal CX delivers curing uniformity across all curing depths. This ensures a fast and predictable cure for all restorations.



COLLIMATED  
LIGHT



ERGONOMICALLY  
DESIGNED



SMART BATTERY  
TECHNOLOGY

**\$850\***

RADII-CAL CX  
MRP \$1246.34



**\$899\***

## ULTRAMAT 2

HIGH SPEED MULTI-USE TRITURATOR

- 5 year limited warranty
- Low vibration and extremely quiet
- Accurate and consistent trituration
- For mixing most encapsulated dental materials
- Safe and simple to use
- Easy to clean
- Dual voltage

ULTRAMAT 2      MRP \$1462.77



**\$530\***

## ULTRAMAT S

HIGH SPEED MULTI-USE TRITURATOR

- Safe and simple to use
- Accurate and consistent trituration
- Low vibration and extremely quiet
- Simple to use - 3 pre-set mixing times
- For mixing most encapsulated dental materials
- Easy to clean
- Dual voltage

ULTRAMAT S      MRP \$769.74



**polydentia**  
swiss manufacture



**BUY 1 UNICA INTRO KIT  
GET ANY 50 PACK OF  
UNICA MATRICES FREE**

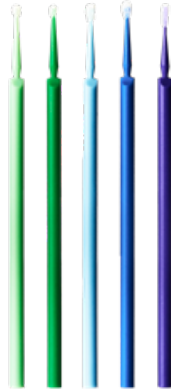
UNICA INTRO KIT	MRP \$535.78
ANTERIOR MATRICES 50PK	MRP \$223.01
MINIDEEP ANTERIOR MATRICES 50PK	MRP \$244.82
PROXIMAL ANTERIOR MATRICES STD 50PK	MRP \$223.01

## ACCESSORIES

### POINTS

DISPOSABLE BRUSH APPLICATORS

- Points disposable brush applicators are used to quickly transfer small amounts of material into areas that are difficult to reach. Points are resistant to common solvents in dental materials.
- Solvent resistant, non-absorbent, non-linting fibers
- Boxes of 400 in medium, fine and superfine



BOX OF 400 POINTS      MRP \$44.95  
POINTS DISPENSER BOX      MRP \$36.72



**BUY 3, GET 1 FREE  
PLUS A BONUS  
POINTS DISPENSER**

## ETCHANT

### SUPER ETCH

37% PHOSPHORIC ACID ETCHANT GEL FOR ENAMEL AND DENTINE

- Stays where placed.
- Does not run onto soft tissue
- Washes away easily with water
- Easily controlled gel which flows under direction, not gravity
- Blue tint for easy placement visibility
- Thixotropic gel to improve handling



SUPER ETCH BULK KIT      MRP \$96.83  
SUPER ETCH 12GM SYRINGE      MRP \$62.46  
SUPER ETCH GEL 15mL BOTTLE      MRP \$40.29  
SUPER ETCH JUMBO      MRP \$200.52

**BUY 3, GET 1 FREE**



YOUR  
SMILE.  
OUR  
VISION.

Call 1800 337 003  
info@sdi.com.au  
www.sdi.com.au  
www.polawhite.com.au



**New South Wales**  
Hany Gobran 0418 210 341  
Elli Mouhtouris 0400 849 017  
Allison Ohtback 0400 305 512

**Western Australia**  
Toni Doherty 0448 086 925

**South Australia/Northern Territory**  
Andriana Spithas 0417 080 771

**Victoria**  
Jo Coyle 0419 313 765  
Snezana Josifoski 0418 567 758  
Shelby MacDonald 0408 174 626

**Tasmania**  
Snezana Josifoski 0418 567 758

**Queensland**  
Natalie Johnson 0409 807 290  
Dora Zanin 0428 910 805

\*Offers are valid 1st November - 30th November 2024. Offers cannot be combined. All prices include GST. Free goods will be of equal or lesser value. The above-mentioned offers are not applicable on corporate, government accounts or those customers who have received discounted pricing. Offers are valid in Australia only.